

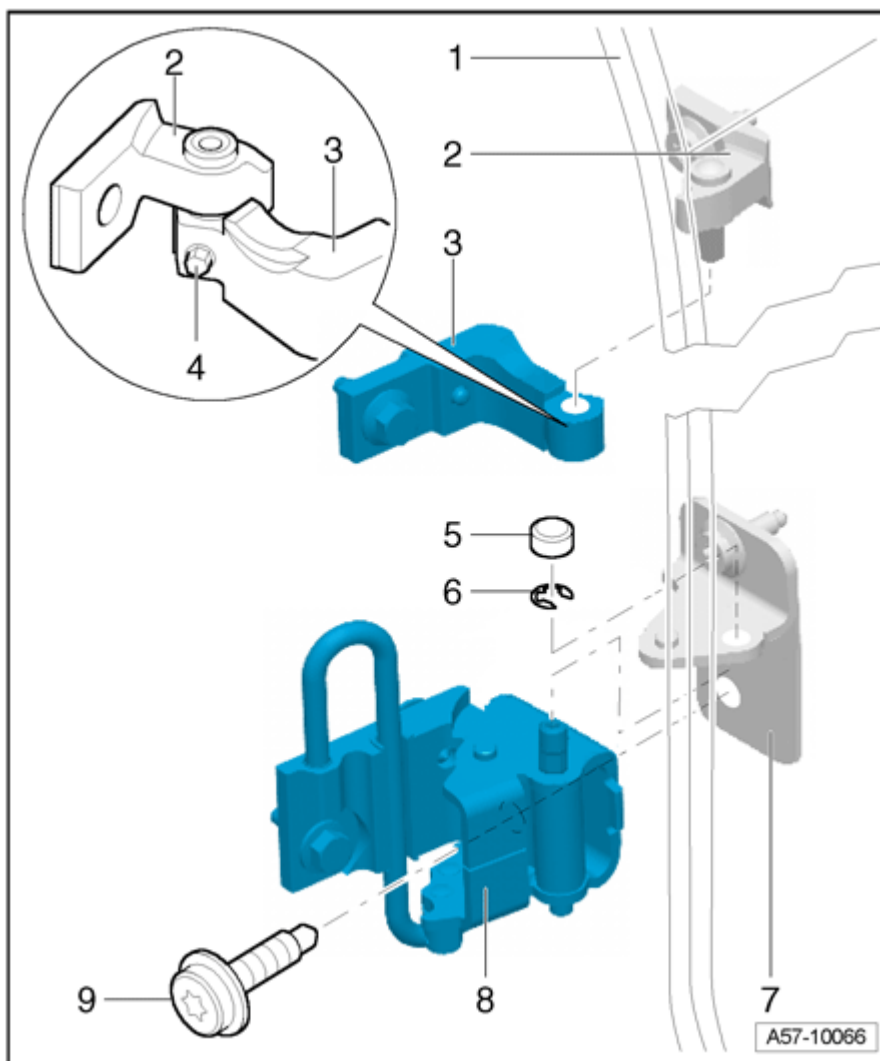
## 58 - REAR DOORS, WINDOW REGULATORS

### REAR DOOR

#### Door, removing and installing

#### NOTE:

- After you have disconnected the electrical connections on the bottom of the A-pillar and B-pillar, you can lift the entire door completely out of the door hinges for various installation procedures.
- Adjustments must not be made after installation.



**Fig. 128: Identifying Rear Door, Assembly Overview**  
 Courtesy of VOLKSWAGEN UNITED STATES, INC.

1 - Door piece

- Pull boots down from B-pillar.
- Disconnect electrical connectors on bottom of B-pillar.
- Loosen screw - **4** - on top of door hinge.
- Remove bottom combination screw - **9** - on bottom of door hinge.
  
- Remove cover cap from hinge bolt.

**CAUTION: Protect painted surfaces on front or rear door from damage.**

- Carefully lift door up and out of hinges.

2 - Upper door hinge, upper part

- Not available separately.
- Remains installed on door side.

3 - Upper door hinge, lower part

- Not available separately.
- Remains installed on B-pillar.

4 - Locking screw

- 25 Nm

5 - Cover cap

- Place on joint pins.

6 - Securing spring

- Only installed on replacement part.
- Remove after installing new hinge.

7 - Bottom door hinge, upper part

- Remove any tension between upper and lower parts on bottom of door hinges if necessary with screwdriver, for example.
  
- Not available separately.
- Remains installed on door side.

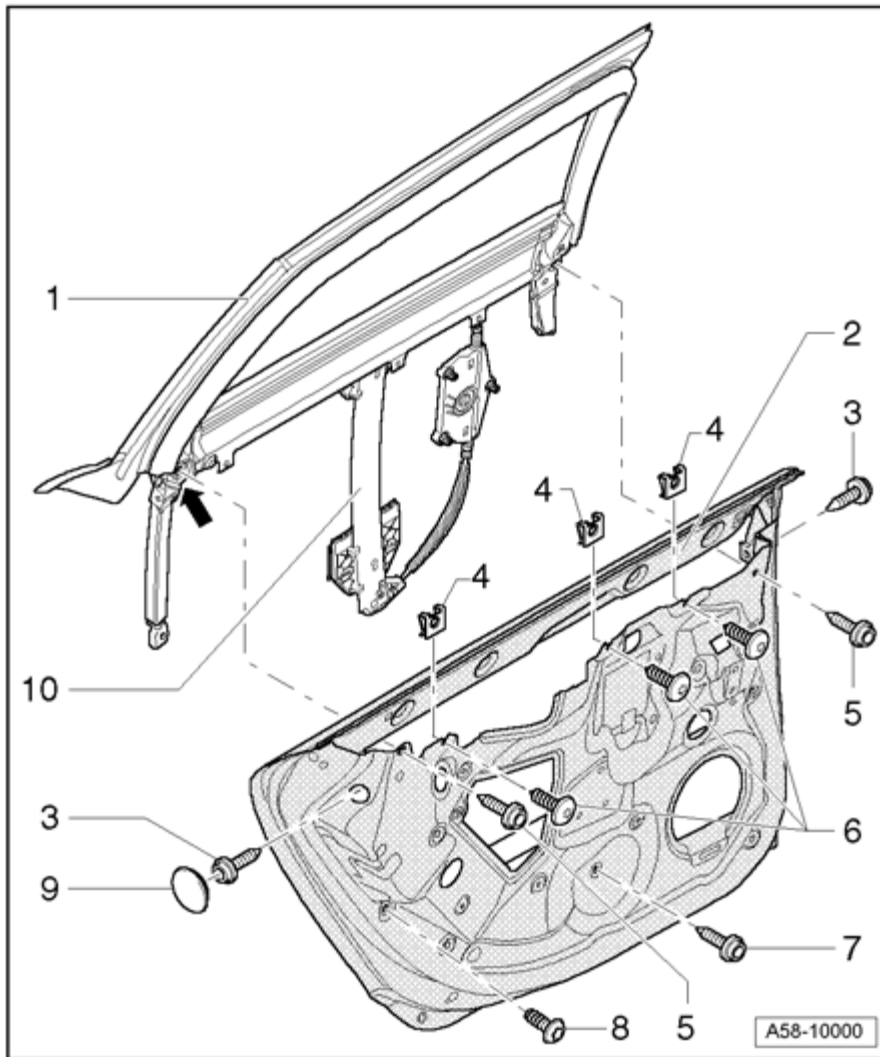
8 - Bottom door hinge, lower part

- Not available separately.
- Remains installed on B-pillar.

9 - Combination screw

- 32 Nm

**Window frame and window regulator, removing and installing**



**Fig. 129: Window Frame And Window Regulator, Assembly Overview**  
Courtesy of VOLKSWAGEN UNITED STATES, INC.

1 - Window frame

Removal:

- Remove door trim. --> **70 - INTERIOR TRIM**
- Remove window regulator motor
- Disconnect electrical connectors.
- Remove sheet metal screws - **6** - and collar screw - **7** -.
- Remove fitting screws - **5** - and collar screws - **3** - and lift window frame with window regulator up and out of door.

**Installing:**

- Insert window frame and window regulator into door from above.
- Knock in the upper profile halves of door-side gasket into window frame at top.
- Screw front and rear collar screws - **3** - in lightly.
  - Torx screw as well - **8** -.
- Screw in fitting screws - **5** - and tighten to 32 Nm.

**NOTE:**

- **After you have secured fitting screws, window frame is already adjusted for height.**
- **If you still must adjust window frame height, exchange fitting screw for a standard screw of same strength and length.**
- **For inclination adjustment, push upper part of window frame - **1** - inward lightly and tighten screws - **3** - to 32 Nm.**
- **Tighten bolt - **8** - to 10 Nm.**
- **Tighten locating bolt for longitudinal adjustment - arrow - in window frame to 32 Nm.**
- **Knock in lower half of door seal into inner door plate.**
- **Secure window regulator rail with screw - **7** - on inner door plate and tighten to 6 Nm.**
- **Press threaded pin of window regulator reel through inner door plate until it engages.**
- **Install window regulator motor.**

2 - Rear door

3 - Collar screw

- 32 Nm

4 - Spring nut

- Inserted on door flange

5 - Fitting screw

**NOTE:**

- **Window frame is already adjusted correctly for height with fitting screw.**
- **If an adjustment should become necessary anyway, fitting bolts can be replaced with bolts of the same size, length and toughness, as listed in replacement parts catalog.**
- **32 Nm**

6 - Metal screw

- 2.5 Nm

7 - Collar screw

- 6 Nm

8 - Torx screw

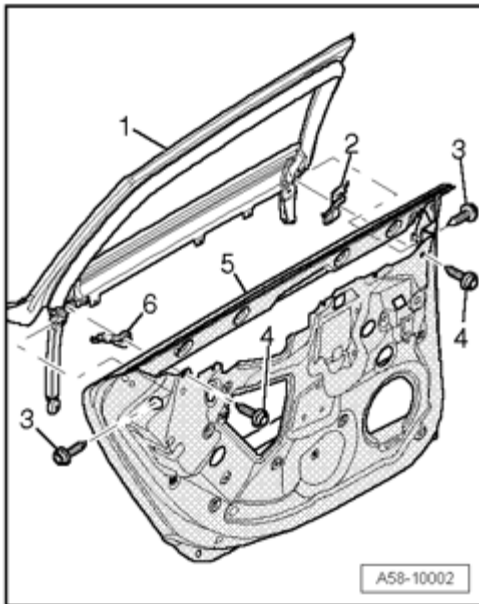
- 10 Nm

9 - Cover cap

- Clipped in door

10 - Window regulator

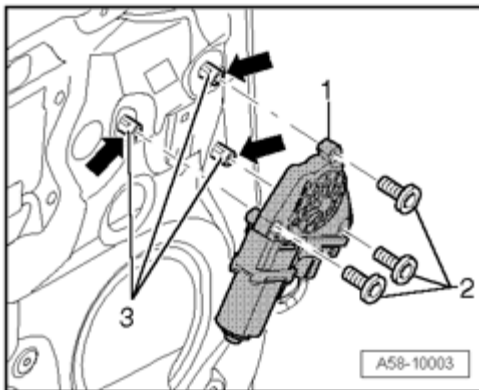
- Bolted to window frame for installing in door.



**Fig. 130: Identifying Window Frame Seal**  
 Courtesy of VOLKSWAGEN UNITED STATES, INC.

#### Window frame seal

- Before installing window frame - **1** - in door - **5** - , check for correct seal seating - **6** - and - **2** - .
- Replace seal if necessary
- Remove protective paper from seals and press firmly onto window frame as shown.
- Place window frame in door and install fitting screws - **4** - and collar screws - **3** - .

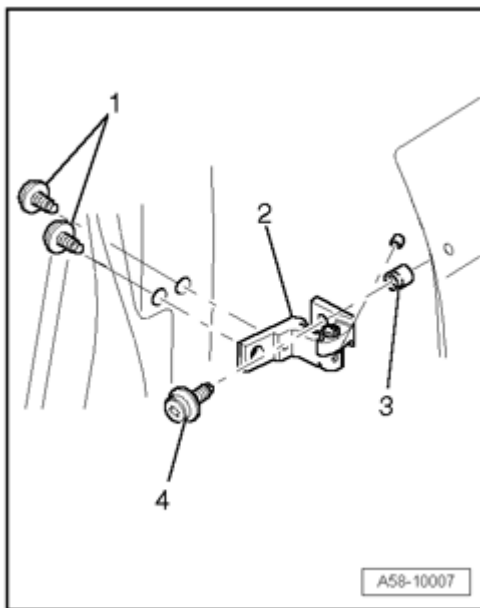


**Fig. 131: Unscrewing Bolts And Removing Window Regulator Motor**  
 Courtesy of VOLKSWAGEN UNITED STATES, INC.

#### Window regulator motor, removing and installing

- To remove, unscrew bolts - **2** - and remove window regulator motor.

- Install window regulator motor --> **Motor for window regulator, removing and installing.**

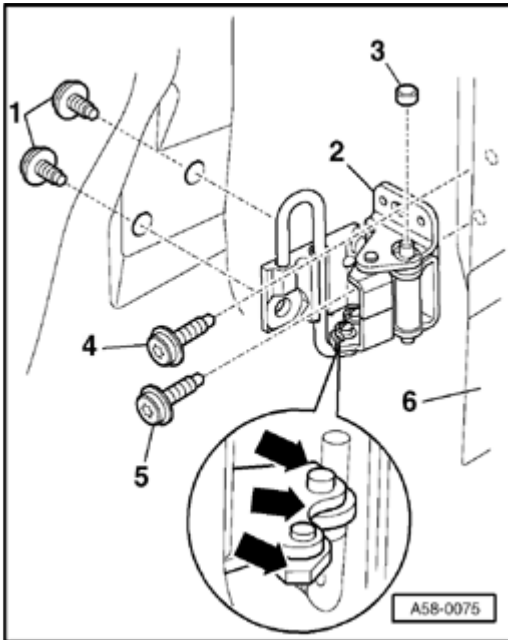


**Fig. 132: Upper Door Hinge**

Courtesy of VOLKSWAGEN UNITED STATES, INC.

#### Upper door hinge

- Torx screws T 45 - **1** - 32 Nm bolted to top of B-pillar from interior of vehicle.
- Top door hinge - **2** -.
- Spacer sleeve - **3** -.
- Torx bolt T 45 - **4** - 32 Nm.



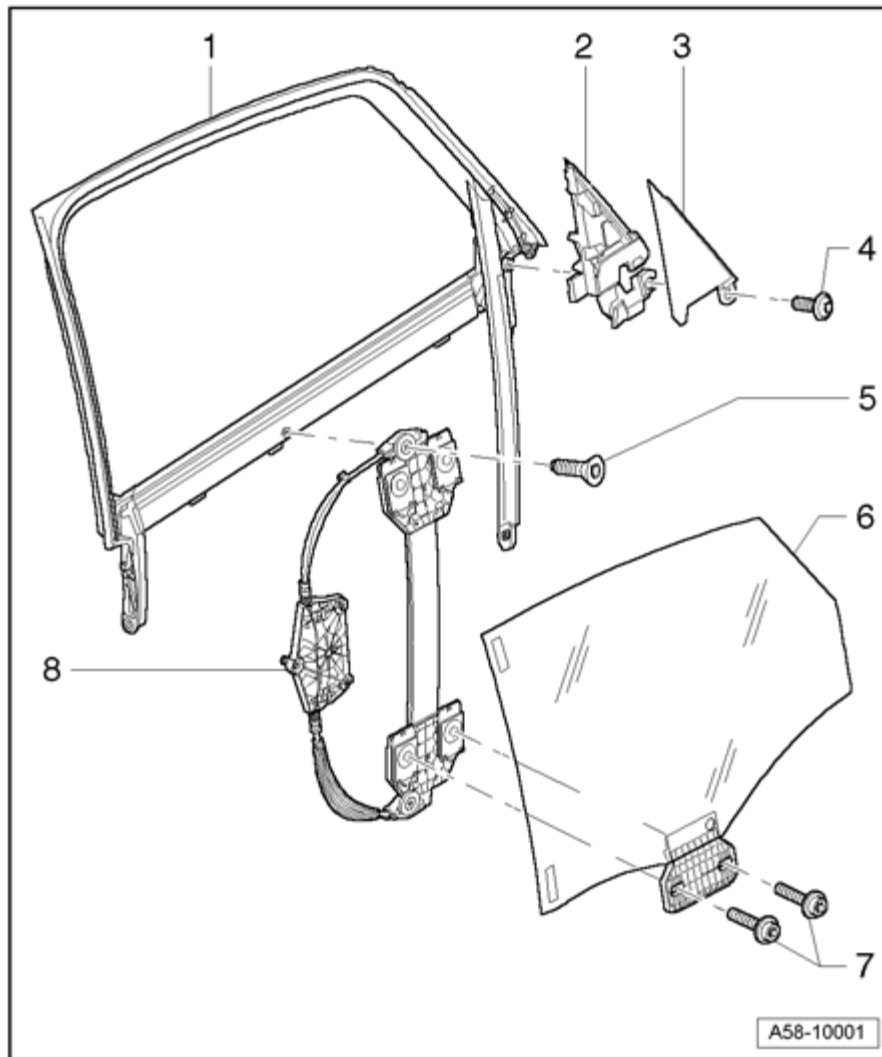
**Fig. 133: Removing/Installing Lower door hinge**  
 Courtesy of VOLKSWAGEN UNITED STATES, INC.

Bottom door hinge.

- B-pillar trim removed.
- Torx screws T 45 - **1** - 32 Nm bolted to B-pillar from interior of vehicle.
- Bottom door hinge - **2** -.
- Cover cap - **3** -.
- Torx bolt T 45 - **4** - 32 Nm.
- Fitting bolt T 45 - **5** - 32 Nm.
- Re-grease lubrication points - **arrows** - in service interval.
- Front door - **6** -.

**Window regulator and door window, removing**





**Fig. 134: Window Regulator And Door Window, Assembly Overview**  
 Courtesy of VOLKSWAGEN UNITED STATES, INC.

1 - Window frame

- Removal:
- Remove door trim. --> **70 - INTERIOR TRIM**
- Window frame removed together with window regulator from door --> **Window frame and window regulator, removing and installing.**
- Door window - **6** - removed
- To remove, unscrew countersunk screw - **5** - and remove window regulator from window frame.
- **Installing:**
- When installing, ensure guide rail runs parallel to guide.
- Tighten bolts - **5** - to 6 Nm.

2 - Gasket

3 - Triangular panel

- Before removing, disassemble window frame and window regulator.
- Unscrew bolt - **4** - and remove panel sideways.

4 - Combination screw

- 7.5 Nm

5 - Countersunk screw

- 6 Nm

6 - Door window

Removal:

- Run door window down.
- Unscrew bolts - **7** - and remove door windows from window regulator.

**Installing:**

- Insert window into window regulator.
- Screw bolts - **7** - lightly into window regulator, but do not tighten yet.
- Drive door window upward into window frame.
- Pull door window toward front into window guide on window frame at B-pillar and tighten bolts - **7** - to 4 Nm.

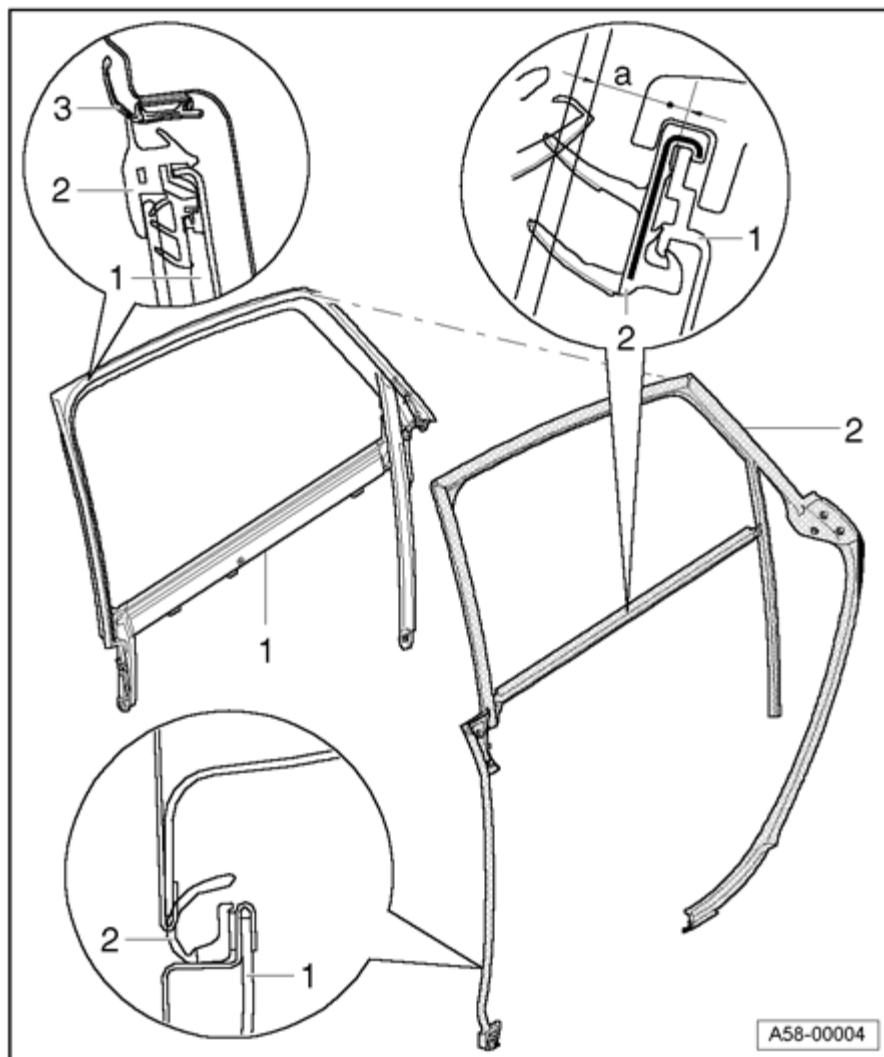
7 - Countersunk screw

- 4 Nm

8 - Window regulator

- Window frame removed together with window regulator from door --> **Window frame and window regulator, removing and installing.**
- Door window removed.
- To remove, unscrew countersunk screw - **5** - and remove window regulator from window frame.

**Window frame seal, replacing**



**Fig. 135: Window Frame Seal, Assembly Overview**  
 Courtesy of VOLKSWAGEN UNITED STATES, INC.

1 - Window frame

- Removing and installing --> **Window frame and window regulator, removing and installing**

2 - Window frame seal

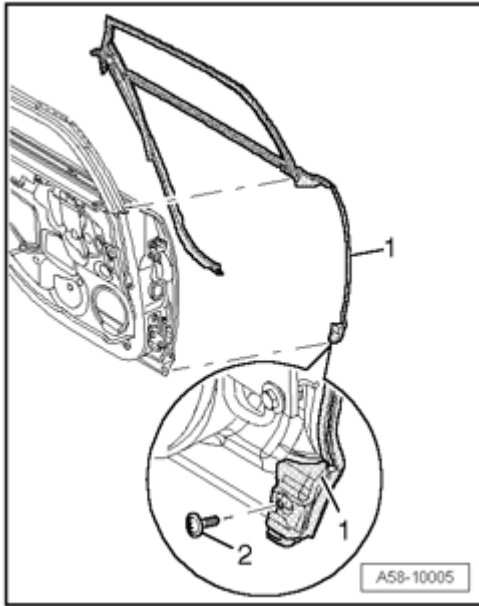
- To install, hook seal securing pieces into corners on B-pillar and C-pillar in window frame.
- Press seal sideways onto window frame.

**NOTE:**

- Seal must not be installed by knocking it on.
- Seal must be installed by pressing on.

- Use soapy water to assist assembly of seal.

### 3 - Roof trim molding



**Fig. 136: Installing Lower Seam Seal**

Courtesy of VOLKSWAGEN UNITED STATES, INC.

Install lower seam seal

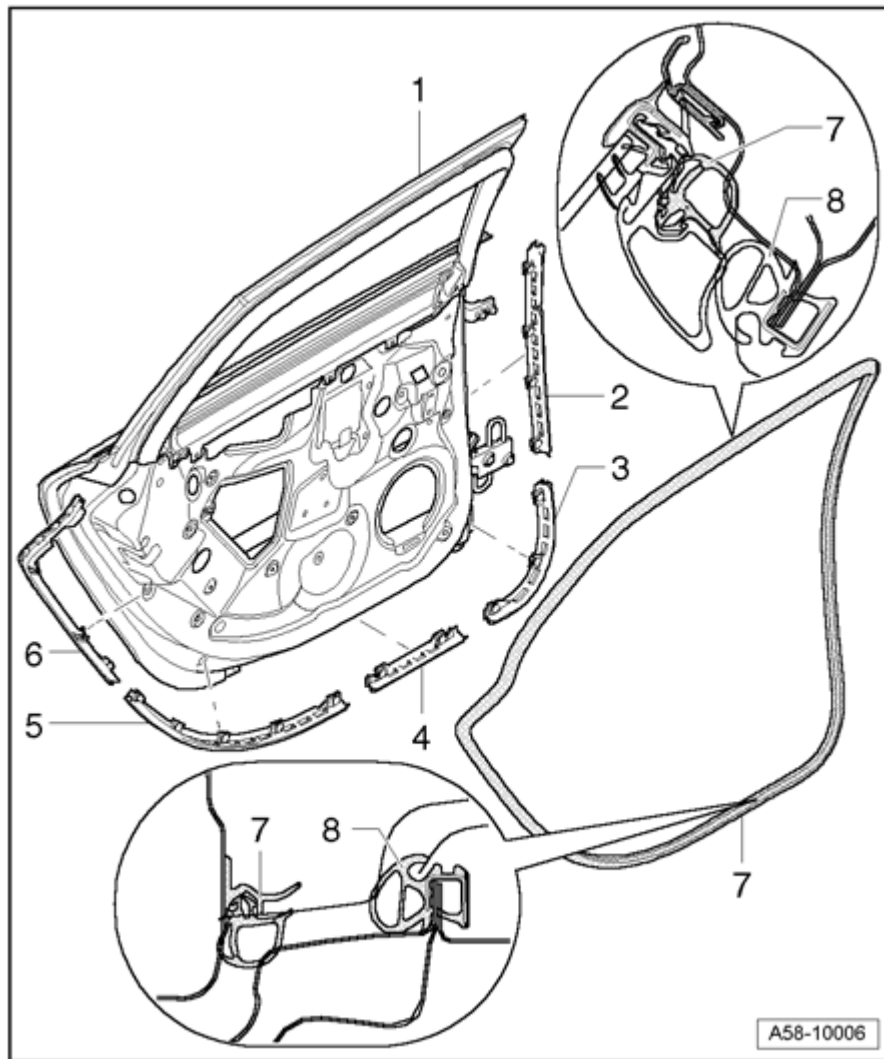
**NOTE:**

- To make installation easier, you can remove the entire door from the door hinges and install again without adjusting --> Door, removing and installing

**NOTE:**

- Clean adhesive surface before installing seal.
- Adhesion surface must be free of dust and grease.
- Clip seal into top.
- Remove protective seal foil - 1 - beginning at bottom up to area of impression.
- Attach seam seal up to area of impression.
- Attach lower formed piece and bond on seam seal completely in lower area.
- Remove remaining protective foil and bond on seal in upper area.
- Screw in bottom of seal and tighten screw - 1 - to 1 Nm.
- Press door cover rubber lip onto formed piece on bottom of A-pillar post.

## Outer door seal, removing and installing



**Fig. 137: Outer Door Seal, Assembly Overview**  
 Courtesy of VOLKSWAGEN UNITED STATES, INC.

1 - Window frame

- Installed in door

2 - Retaining tracks

- Retaining tracks are clipped in around door

3 - Retaining tracks

4 - Retaining tracks

5 - Retaining tracks

6 - Retaining tracks

7 - Outer door seal

**NOTE:**

- Use some soapy water in window frame area for easier installation.
- Do not use any soapy water in retaining track area.
- Begin installing on top of window frame and press seal around in retaining tracks.

8 - Inner door seal

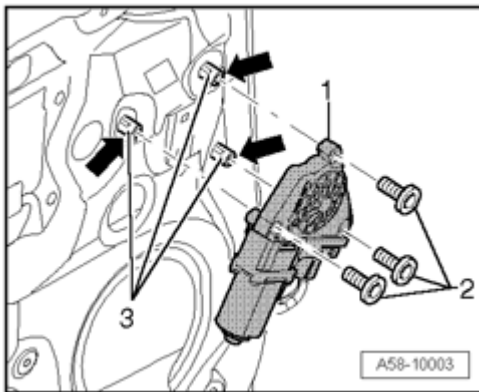
Motor for window regulator, removing and installing

**Removing**

- Door trim removed. --> 70 - INTERIOR TRIM

**NOTE:**

- Motor for window regulator can be removed or installed in every position of motor or side window.
- Before removing motor, disconnect electrical harness connectors.



**Fig. 138: Unscrewing Bolts And Removing Window Regulator Motor**  
Courtesy of VOLKSWAGEN UNITED STATES, INC.

- Remove Torx bolts - 2 - T 30 and remove motor.

**Installing**

- When installing, make sure that threaded pins - **arrows** - are engaged in inner door plate.
- Slide on window regulator motor - 1 - and secure with bolts - 2 -.

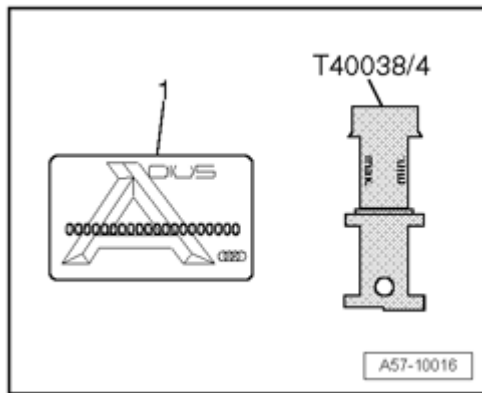
- Tightening torque 3.5 Nm

**NOTE:**

- Only switch ignition on and off after installing motor and connecting wires.
- Then move door window upward to stop and keep pressing switch for window regulator for approx. 2 seconds longer.
- This position is the base position and the high- and low-running function is activated.

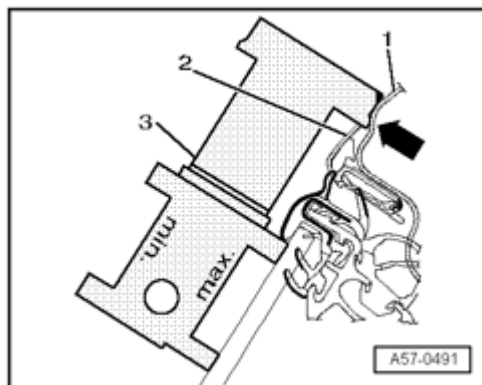
**Door adjustment, checking****Special tools, testers and auxiliary items required**

- Template T40038/4

**Fig. 139: Template T40038/4**

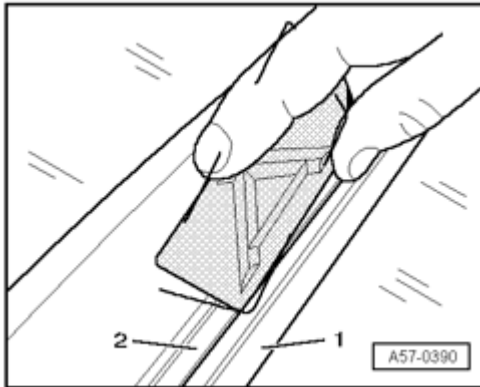
Courtesy of VOLKSWAGEN UNITED STATES, INC.

- Use the template T40038/4 as described in the following for testing (e.g. for wind noises) and for adjusting door.
- For testing contact pressure of sealing lips on roof trim molding, use a standard bank card - **1** - or similar means.



**Fig. 140: Identifying Template, Roof Trim Molding, And Roof**  
 Courtesy of VOLKSWAGEN UNITED STATES, INC.

- For a correct adjustment, adjusting template - 3 - must make contact on roof trim molding - 2 - and on roof - 1 - - arrow -.



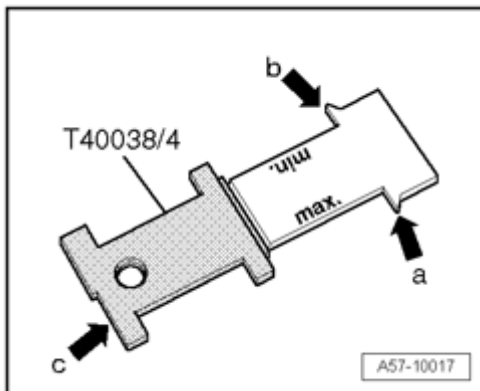
**Fig. 141: Using Standard Bank Card To Drive Off Contact Area Of Sealing Lip To Roof Trim Molding**  
 With Light Pressure

Courtesy of VOLKSWAGEN UNITED STATES, INC.

Testing sealing lip/roof trim molding contact

- Using a standard bank card, drive off contact area of sealing lip to roof trim molding with light pressure.
- When doing this, card must not sink in between sealing lip - 1 - and roof trim molding - 2 -.

Door adjustment at sides (inclination adjustment)



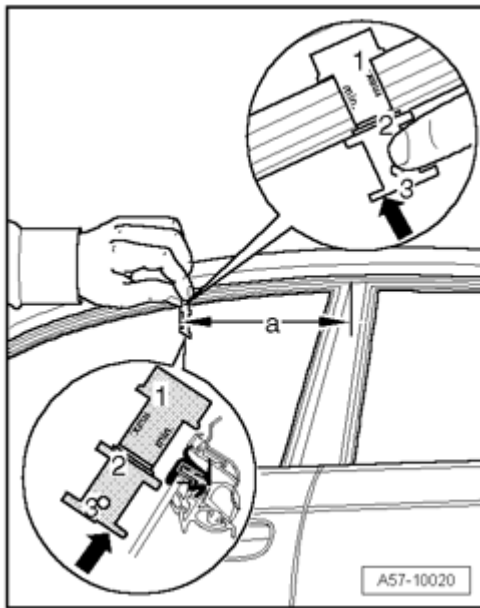
**Fig. 142: Identifying Template Lengths**

Courtesy of VOLKSWAGEN UNITED STATES, INC.

- Template has points of different lengths at arrows - a - and - b -.
- These allow the side adjustment of the doors to be checked.
- On the side with the "max" marking, check whether window frame is seated too far outside.

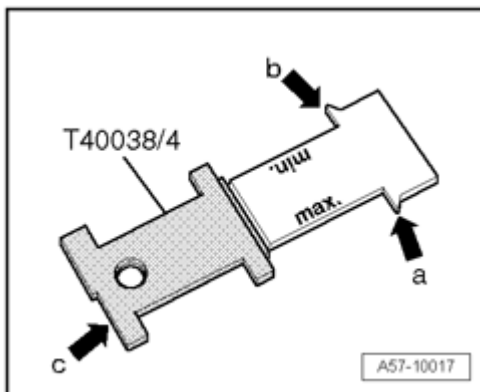


- On the side with the "min" marking, check whether window frame is seated too far inside.



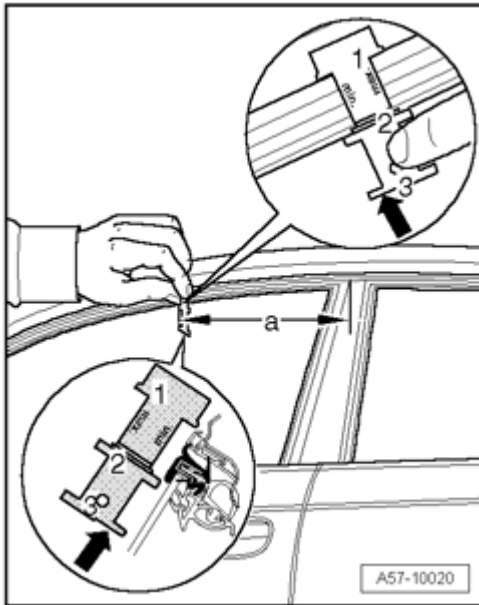
**Fig. 143: Positioning Template With Cut-Out Facing Door Window**  
Courtesy of VOLKSWAGEN UNITED STATES, INC.

- Position template at dimension -  $a$  - = 200 mm and with cut-out - **arrow** - facing door window
- Make sure that points - **1** - and - **3** - make contact.
- At point - **2** - of template, there must be a gap.
- In this position (max), doors are adjusted to farthest outward point within tolerance range.
- If there is no gap at point - **2** - , or there is a gap at point - **1** - , the window frame is set too far outward and must be adjusted.



**Fig. 144: Identifying Template Lengths**  
Courtesy of VOLKSWAGEN UNITED STATES, INC.

- The side with - **arrow b** - (min marking) is used to check whether the window frame is located too far inward in relation to the body.
- Position template at dimension - **a** - = 125 mm and with cut-out - **arrow** - turned away from door window as depicted in magnified areas of illustration.

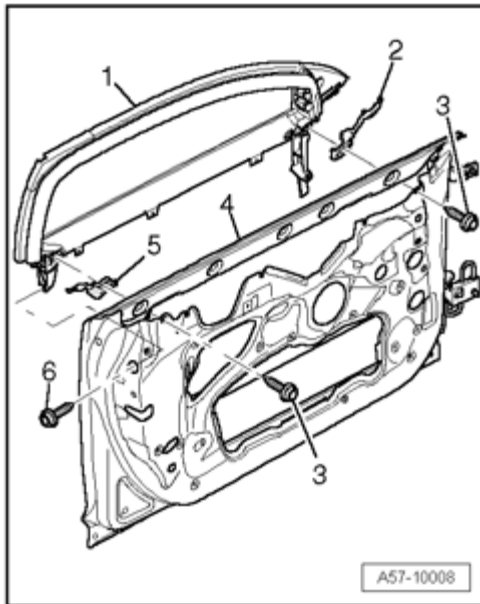


**Fig. 145: Positioning Template With Cut-Out Facing Door Window**  
 Courtesy of VOLKSWAGEN UNITED STATES, INC.

- Make sure that points - **2** - and - **3** - make contact on door window.
- At point - **1** - of template, there must be a gap.
- In this position (min), doors are adjusted to farthest inward point within tolerance range.
- If point - **1** - has no gap, or if template cannot be brought into contact at point - **2** - , window frame is set too far inward and must be adjusted. **Door adjustment at sides (inclination adjustment)**

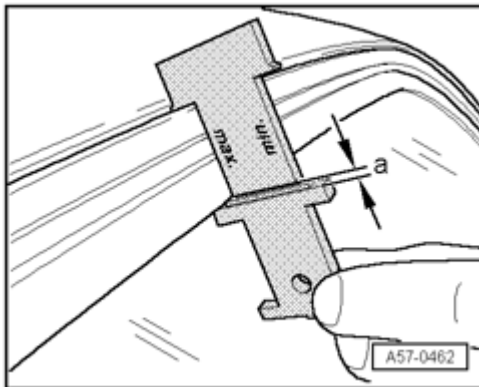
#### Height adjustment at window frame

- If window frame height must be adjusted, fitting screws - **2** - and - **5** - must be replaced with a standard screw of same strength and length.



**Fig. 146: Identifying Window Frame, Door, And Seal Seating**  
 Courtesy of VOLKSWAGEN UNITED STATES, INC.

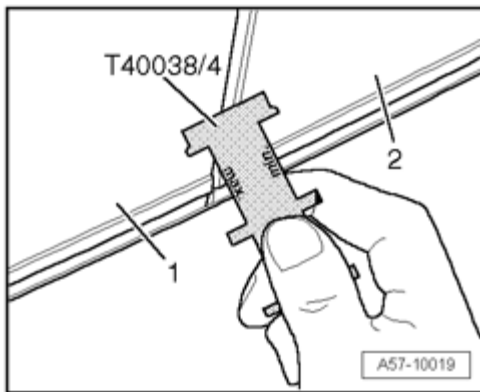
- Window frame - 1 - can now be adjusted in height to door - 4 -.
- Gaskets - 2 - and - 6 - slid into window frame.
- Position adjusting template as shown on roof, or on upper edge of rain channel.



**Fig. 147: Identifying Lower Edge Of Window Frame Located Within Area Of Template Groove For Correct Adjustment**  
 Courtesy of VOLKSWAGEN UNITED STATES, INC.

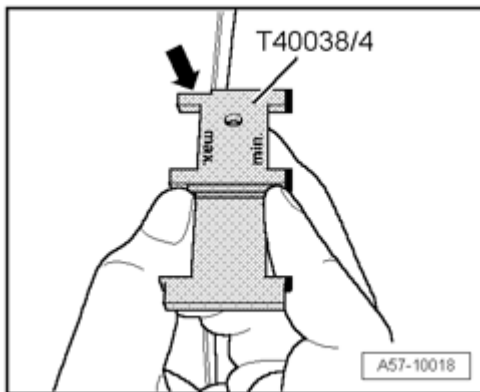
- Lower edge of window frame must be located within area - a - of template groove for a correct adjustment.
- Check/adjust inclination of window frame.

Front door adjustment



**Fig. 148: Identifying Front Door And Side Panel**  
 Courtesy of VOLKSWAGEN UNITED STATES, INC.

- Door position can be assessed using lower side of adjusting template T40038/4 (illustration shows other template).
- No door recess in relation to side panel - **2** - is permitted.
- Recess of front door - **1** - to side panel - **2** - is not permitted (wind noise).

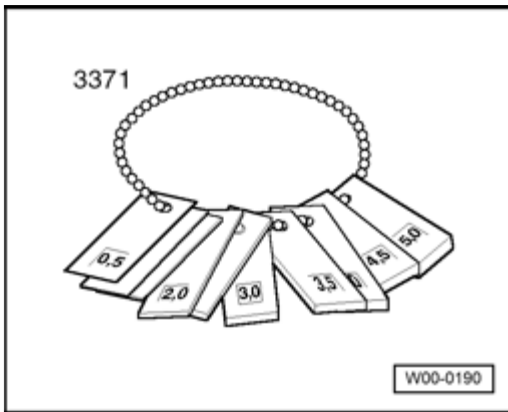


**Fig. 149: Identifying Projection Of Front Door To Side Panel In Range Of Template Cut-Out**  
 Courtesy of VOLKSWAGEN UNITED STATES, INC.

- Projection (maximum 0.8 mm) of front door to side panel must be in range of template cut-out - **arrow** -.

**Door, adjusting**

**Special tools, testers and auxiliary items required**



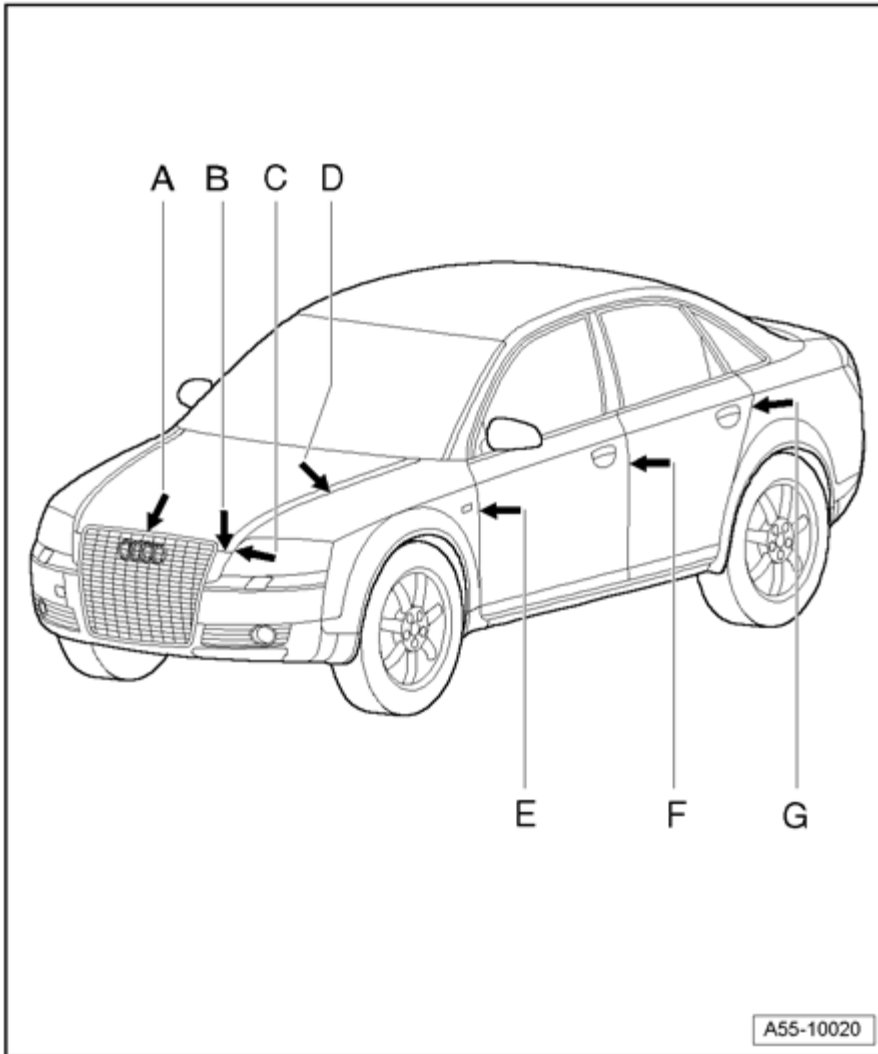
**Fig. 150: Adjusting Gauge 3371**

Courtesy of VOLKSWAGEN UNITED STATES, INC.

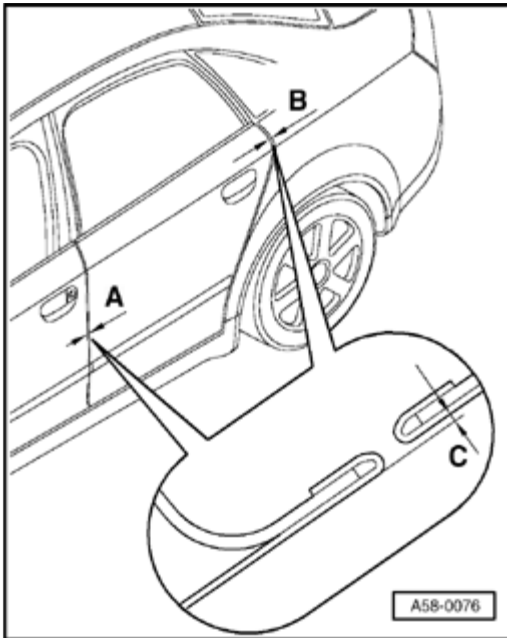
- Adjusting gauge 3371

#### Panel gap dimensions

- Dimension - **A** - = 4.5 mm  $\pm$  0.5 mm
- Dimension - **B** - = 4.5 mm  $\pm$  0.5 mm
- Dimension - **C** - = 3.5 mm  $\pm$  0.5 mm
- Dimension - **D** - = 3.5 mm  $\pm$  0.5 mm
  
- Dimension - **E** - = 3.5 mm  $\pm$  0.5 mm
- Dimension - **F** - = 4.5 mm  $\pm$  0.5 mm
- Dimension - **G** - = 3.5 mm  $\pm$  0.5 mm.



**Fig. 151: Identifying Panel Gap Dimensions**  
Courtesy of VOLKSWAGEN UNITED STATES, INC.

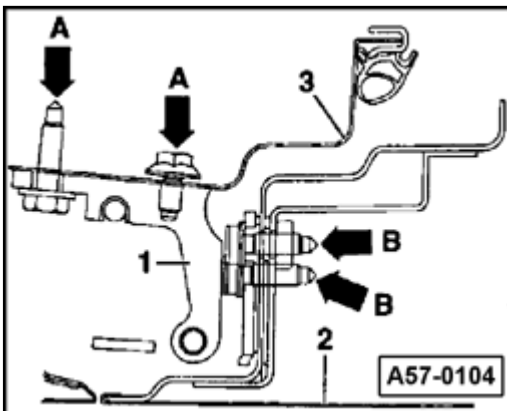


**Fig. 152: Identifying Adjustment Dimensions**  
 Courtesy of VOLKSWAGEN UNITED STATES, INC.

#### Adjustment dimensions

- Dimension - **A** - =  $4.5 \text{ mm} \pm ^* 0.5 \text{ mm}$  .
- Dimension - **B** - =  $3.5 \text{ mm} \pm ^* 0.5 \text{ mm}$  .
- Flush dimension - **C** - =  $^* \text{ mm} + 1 \text{ mm}$  in parallel position to chassis.

#### Adjustment in longitudinal direction



**Fig. 153: Adjustment In Longitudinal Direction**  
 Courtesy of VOLKSWAGEN UNITED STATES, INC.

- Adjustment in longitudinal direction is performed by loosening hinge bolts - **arrow A** - of B-pillar at top of door hinge or/and bottom and sliding doors - **2** - (over-sized holes in hinge or in B-pillar).

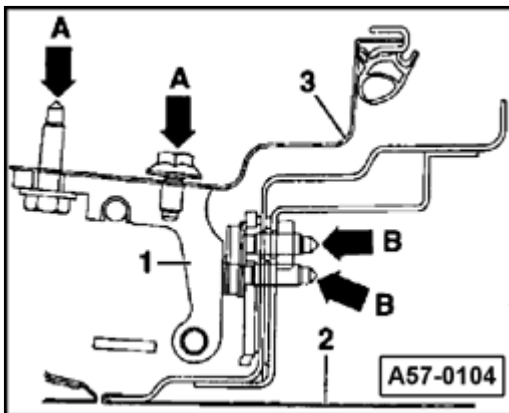
- Tightening torque: 32 Nm.
- Door hinge - **1** -.
- A-pillar - **3** -.
- Door - **2** -.

**NOTE:**           ● Illustration shows lower door hinge.

Adjustment to center of vehicle

**NOTE:**

- A fitting screw is installed on bottom of door hinge.
- When repairing, an adjustment is therefore not necessary under normal circumstances.
- If an adjustment should become necessary anyway, fitting bolts can be replaced with bolts of the same size, length and toughness, as listed in replacement parts catalog.



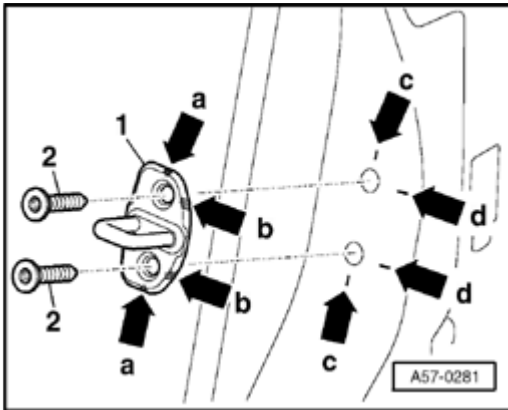
**Fig. 154: Adjustment In Longitudinal Direction**  
Courtesy of VOLKSWAGEN UNITED STATES, INC.

- The adjustment to vehicle center occurs by loosening hinge bolts ( - **arrow B** - ) at top and/or at bottom of door and shifting the doors (elongated holes in hinge).
- Tightening torque: 32 Nm.

**NOTE:**           ● In rear portion of door, adjust door depth (relative to vehicle center) via striker pin.

Adjusting with striker pin





**Fig. 155: Adjusting Via Striker**

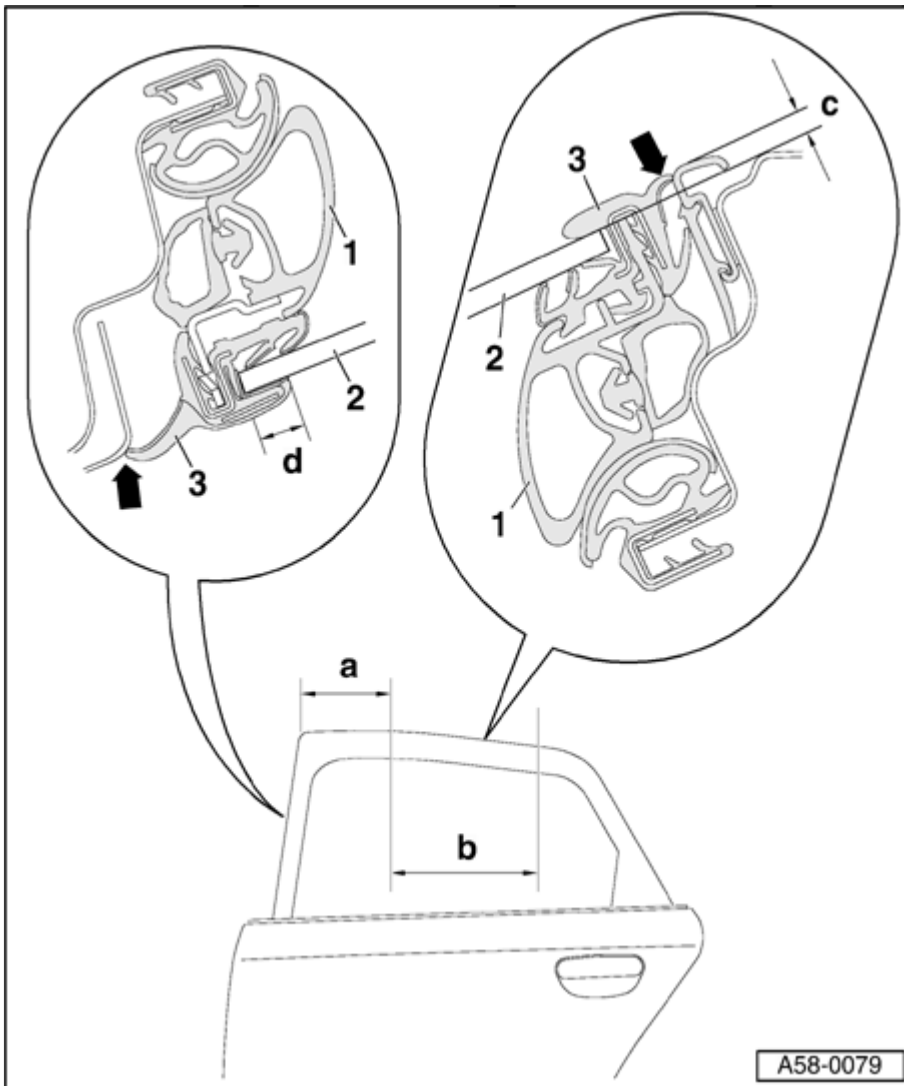
Courtesy of VOLKSWAGEN UNITED STATES, INC.

- Loosen bolts - 2 -.
- Use the markings ( - **arrows a** - and - **arrows c** - ) for side adjustment.
- Slide striker pin - 1 - until door is flush with contour of chassis.

**NOTE:**

- **Door may only be adjusted for depth (towards car interior) and not for height.**
- **Use the markings ( - arrows b - and - arrows d - ) for height adjustment.**
- **Striker pin must align in door lock center for correct adjustment.**
- **Tighten screws to 25 Nm.**

Window frame adjustment dimensions



A58-0079

**Fig. 156: Adjustment Dimensions For Rear Door Window Frame**  
 Courtesy of VOLKSWAGEN UNITED STATES, INC.

1 - Window frame

- For correct door adjustment, sealing lip must make clean contact to contours at roof frame and at B-pillar, see - **arrows** -.

2 - Door window

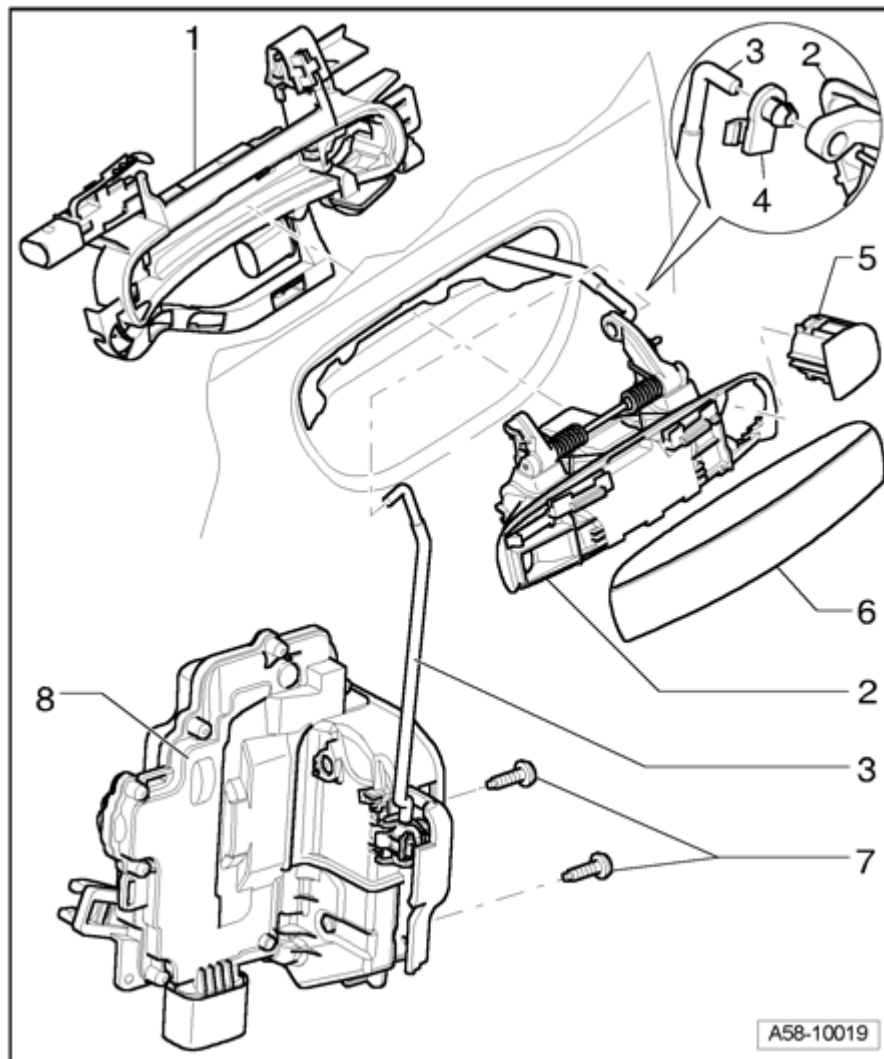
- Adjust door until the result is dimension - **c** - = 4 mm in area - **b** - = 300 mm.
- Dimension - **c** - can be tested further using and adjustment template T40038/4.
- Dimension - **a** - of front door edge starting at B-pillar = 200 mm.

3 - Window frame

- Door window - 2 - must drive as far as dimension -  $d$  - = 7.5 mm<sup>-1</sup> mm into window frame at B-pillar.

### Rear door handle and door lock

#### Assembly overview



**Fig. 157: Rear Door Handle And Door Lock, Assembly Overview**  
 Courtesy of VOLKSWAGEN UNITED STATES, INC.

1 - Door handle mount

- Releasing **Disengage mount for door handle.**

2 - Door handle

- Before disassembling, remove window frame and window regulator.

- Cover - **5** - removed.
- Removal --> **Window frame and window regulator, removing and installing.**

3 - Operating rod

- Clip into door lock **Engaging operating rod in door lock.**

4 - Clip

- Engage operating rod in clip, swivel clip 90 ° and engage at operating rod.

5 - Cover

6 - Door handle trim

- Removal Remove trim. under **Remove trim**

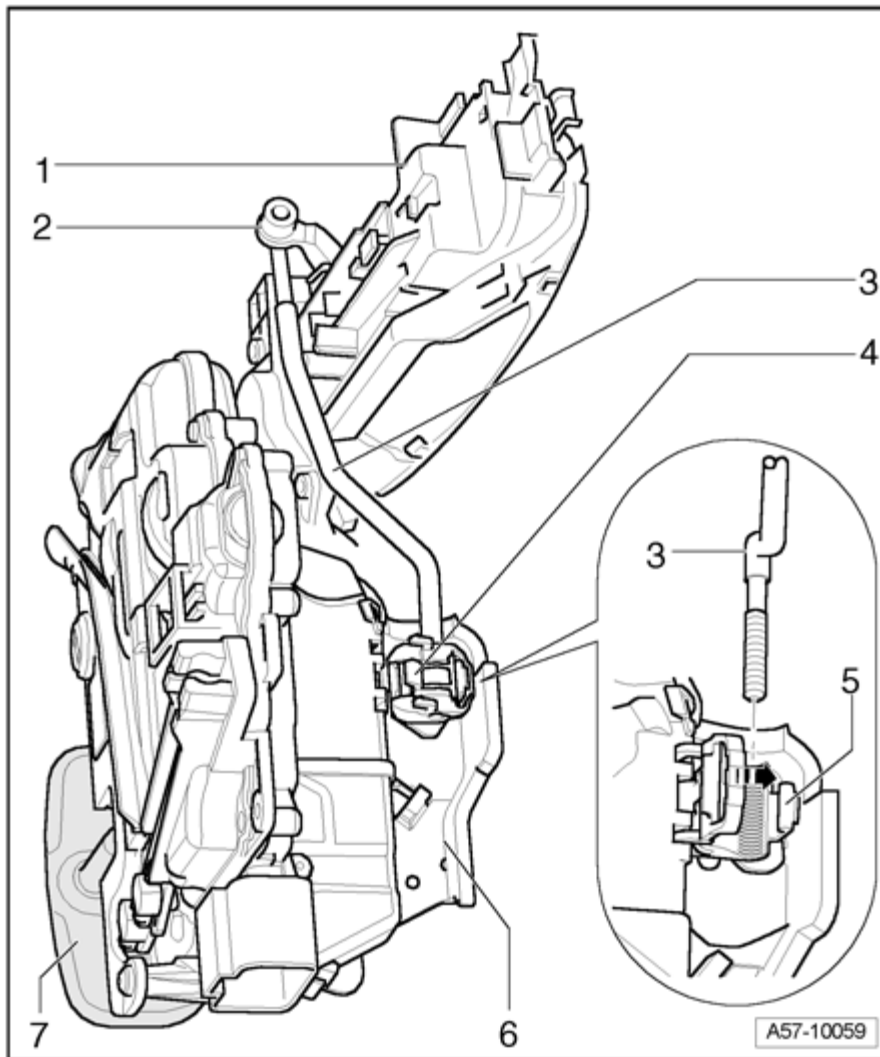
7 - Socket head bolt

- 20 Nm

8 - Door lock

- Removal:
- Door trim removed.
- Window frame and window regulator removed --> **Window frame and window regulator, removing and installing.**
- To remove, unscrew multi-point bolts - **5** - and remove door lock downward.

**Door handle, removing**



**Fig. 158: Identifying Door Handle Assembly Overview**  
 Courtesy of VOLKSWAGEN UNITED STATES, INC.

1 - Door handle

- Remove cover before removing.

2 - Clip

- When disassembling door handle - 1 - , unclip operating rod - 3 - here.

3 - Operating rod

- Before removing door handle, disengage at clip - 2 - .
- After installing a new door lock, first replace operating rod in release lever slide - 4 - and engage catches - 5 - **Engaging operating rod in door lock.**

## 4 - Release lever

- To engage operating rod - **3** - engage retainer in - **direction of arrow** - on release lever catches - **5** -.

## 5 - Catches

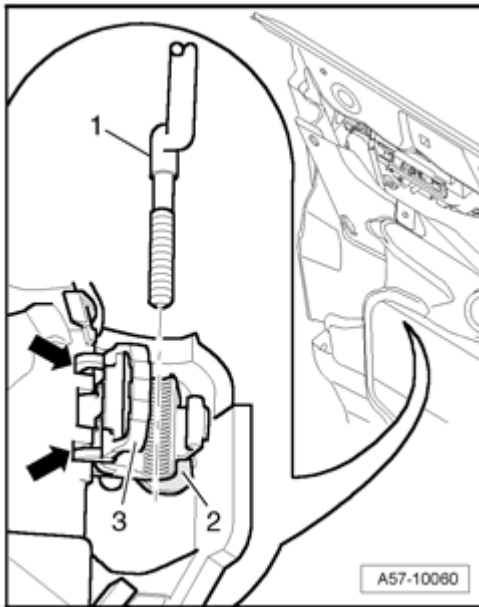
- Release lever retainer must engage cleanly in catches.

## 6 - Door lock

- Removal

## 7 - Striker pin

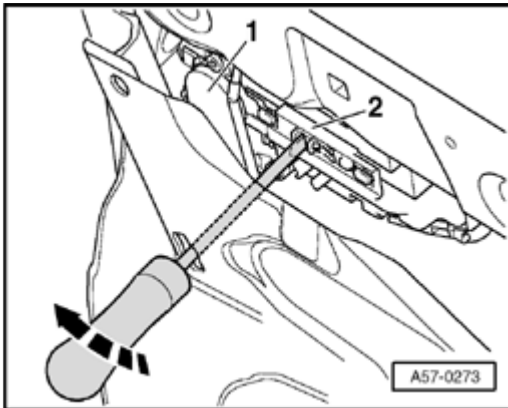
- Adjusting **Adjusting with striker pin**

**Engaging operating rod in door lock**

**Fig. 159: Identifying Operating Rod, Release Lever, Retainer, Catch, And Door Lock**  
 Courtesy of VOLKSWAGEN UNITED STATES, INC.

- When installing a new door lock, clip operating rod - **1** - into release lever - **2** -.
- To release operating rod, fold retainer - **3** - down until it engages in release lever catch - **3** -.
- When removing door lock, you must release retainer and engage in recesses on door lock - **arrow** -.
- Operating rod may only be clipped in this position.

**Disengage mount for door handle**

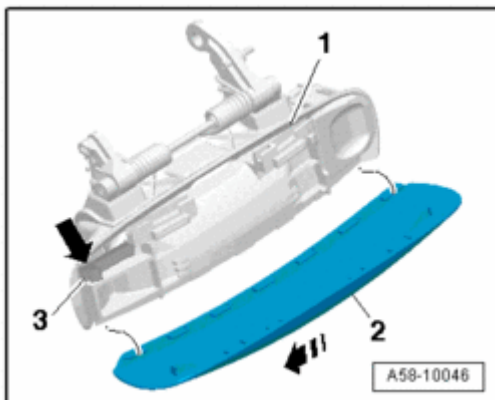


**Fig. 160: Disengaging Mount For Door Handle**

Courtesy of VOLKSWAGEN UNITED STATES, INC.

- Door trim as well as window frame and window regulator removed.
- Insert screwdriver through door plate and release slider - 2 - from door handle - 1 - in - **direction of arrow** - .

#### Remove trim

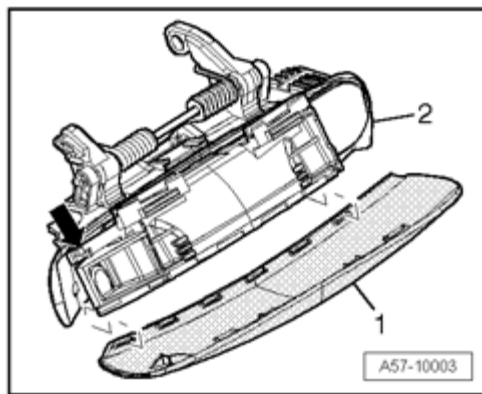


**Fig. 161: Identifying Door Handle, Locking Mechanism, And Trim**

Courtesy of VOLKSWAGEN UNITED STATES, INC.

- To remove, pull door handle - 1 - up and release locking mechanism - 3 - with small screwdriver.
- Slide trim - 2 - forward slightly, disengage sides at top and remove from door handle.

#### Handle trim catch



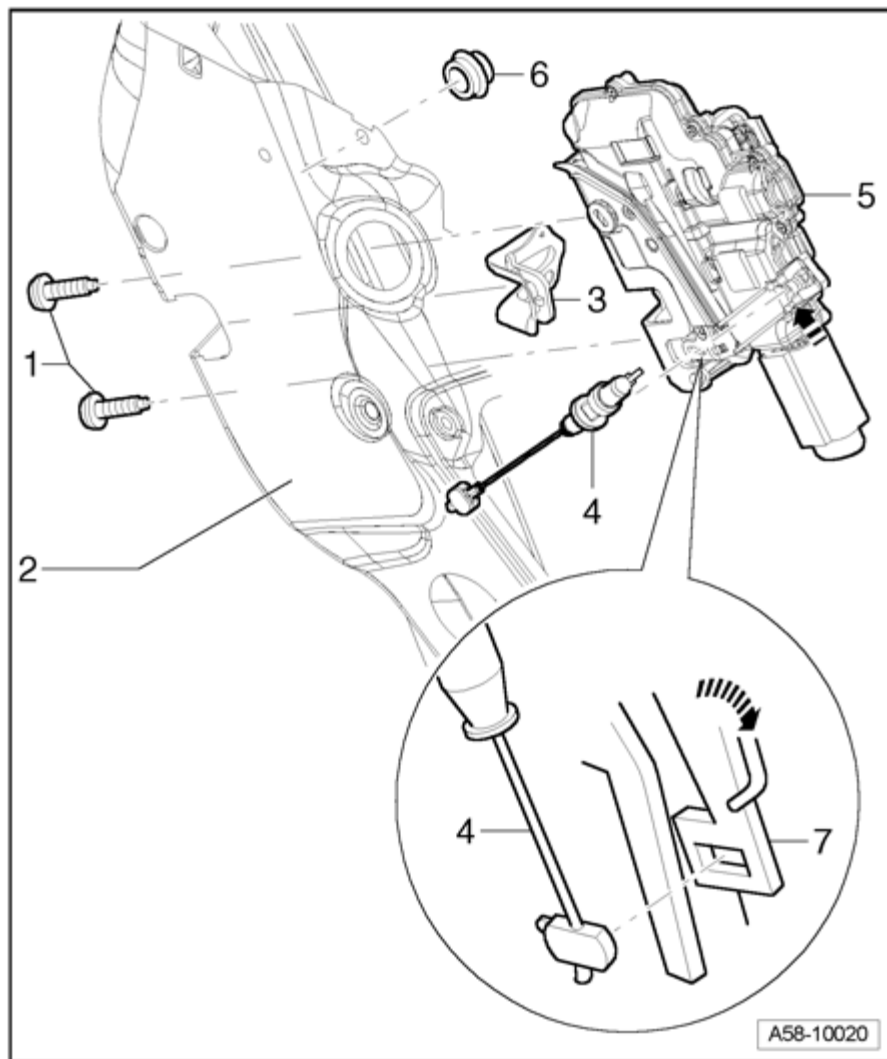
**Fig. 162: Identifying Locking Mechanism On Door Handle Engaged In Trim**  
Courtesy of VOLKSWAGEN UNITED STATES, INC.

- When installing, locking mechanism - **arrow** - on door handle - **2** - must engage in trim - **3** -.

#### Rear door lock, removal

#### Assembly overview





**Fig. 163: Rear Door Lock, Assembly Overview**  
 Courtesy of VOLKSWAGEN UNITED STATES, INC.

1 - Multi-point bolts M8

- 20 Nm

2 - Rear door

3 - Gasket

4 - Inside door release mechanism release

- Engage in release lever - 7 - on door lock - 5 - **Engaging release in door lock**

5 - Door lock

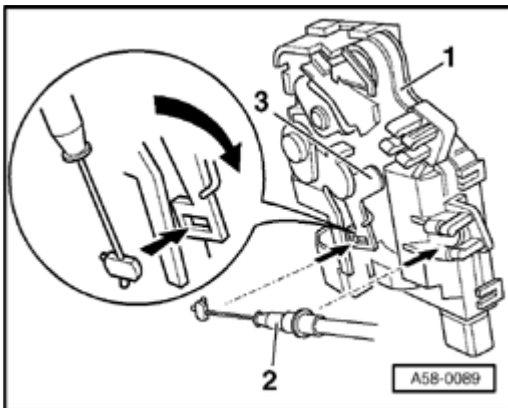
- Door trim removed.
- Window frame and window regulator removed.
- Disconnect electrical harness connector at door lock.
- Release retainer on release lever and unclip operating rod **Engaging operating rod in door lock**
- Unscrew multi-point bolts - **1** - and remove door lock.

6 - Gasket

- Clip into door.

7 - Release lever

**Engaging release in door lock**



**Fig. 164: Engaging Bowden Cable In Door Lock**  
Courtesy of VOLKSWAGEN UNITED STATES, INC.

- To install, first insert release - **2** - vertically into release lever - **3** - as shown in the magnified area of illustration, then swivel 90 ° and clip into door lock - **1** - to secure.